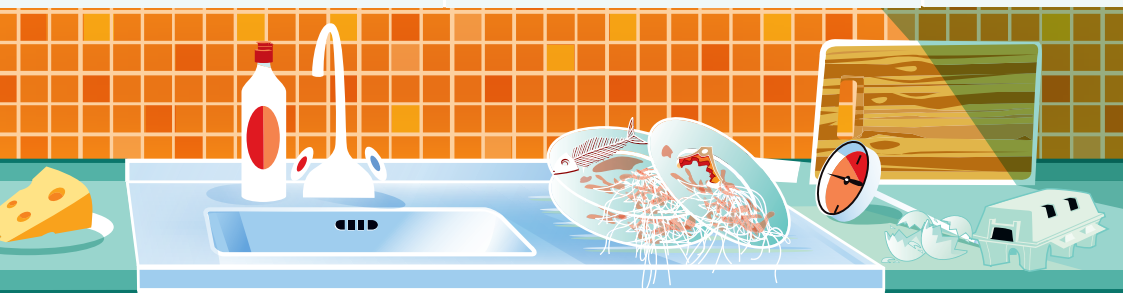


Food Waste Recycling



 don't delay recycle today

LISBURN RECYCLING HOTLINE: 028 9250 9453



LISBURN
CITY COUNCIL

Your improved brown bin service

We are changing your brown bin collection service to include the collection of food waste. This will help local people recycle more from their homes therefore assisting the Council to meet landfill diversion targets.

Brown bins will continue to be collected on the same day as normal. All you need to do is collect your food waste using the caddy and special bags provided and when it is full put the bag into your brown bin. Doing this will reduce the amount of rotting food sent to local landfill sites and will result in food waste being made into a useful compost instead.

Lisburn City Council will provide more bags. When you run out of bags simply fit the red tag to the handle of your bin and the collection crews will leave you more. When you have received your bags remember to remove the tag from your bin and keep it in a safe place to use the next time you need to order more.

All types of food waste including meat, fish, cheese and dairy products can be disposed of via the brown bin.

When will the scheme start?

Please start putting your food waste in your brown bin immediately. Food waste should no longer be disposed of in your landfill bin.

How do I use my food caddy?

1

Line your caddy with a biodegradable bag and fill it with food waste.



2

When it is full tie the bag and put it in your brown bin outside.



3

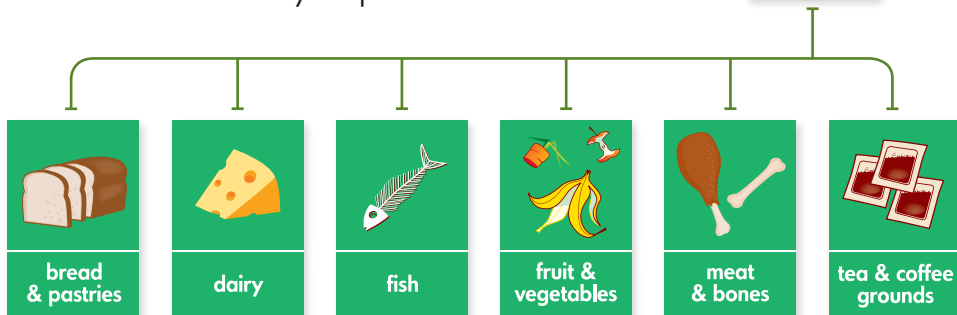
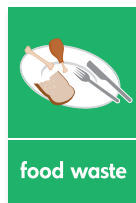
Present your brown bin on its normal collection day – remembering to put the tag supplied onto the handle of the bin if you are running low on bags. Collection crews will then leave more bags when they empty your bin.



What food waste can I recycle?

You can put any raw or cooked food into your caddy including:

- ✓ Meat and fish – raw and cooked, including bones
- ✓ Raw and cooked vegetables and fruit
- ✓ All dairy products such as eggs and cheese
- ✓ Bread, cakes and pastries
- ✓ Pasta, cereal, rice and beans
- ✓ Tea and coffee grounds
- ✓ Leftover food from your plate



Please do not put any of the following materials in your caddy:

- ✗ Liquids
- ✗ Oil or liquid fat
- ✗ Plastic bags - **Only use the biodegradable bags provided to line your caddy**
- ✗ Packaging of any sort
- ✗ Any material that is not food waste

Remember your brown bin can still be used to recycle garden waste including flowers, grass, hedge clippings, leaves, twigs/branches and weeds.

Frequently asked questions

Q

Why is Lisburn City Council introducing changes to the brown bin?

A

Nearly 20% of the waste in the average household landfill bin is food waste. We want to reduce the amount of biodegradable waste sent to landfill so this is an excellent improvement to an existing service that will easily allow householders to recycle all their food waste.

Q

Can I use plastic bags to line my caddy?

A

NO – the special biodegradable bags provided decompose in the composting process, plastic bags don't. If you use any bags other than the special bags provided in your caddy, your brown bin will be marked contaminated by the collection crews and you will be asked to remove the unsuitable bags before your next scheduled collection. If you need more bags fit the tag provided to the handle of your brown bin on collection day and the crews will leave bags when they empty your bin. If you run out of bags before your next scheduled collection call 028 9250 9453 for further advice.

Q

Where should I store my caddy?

A

Caddies are designed for use in the home. It is a personal choice where to store it, some suggestions include:- the cupboard under the sink, on a window ledge or beside your normal kitchen bin.

Things to remember

- Your brown bin can now be used for collection of food waste. Please start using it immediately.
- Make sure your bin is out by **7am** on the morning of collection.
- Only use the special biodegradable bags provided to line your caddy.
- You can choose to put food waste loose into your large brown bin. Caddies and liners have been supplied for convenience.
- If you have any queries about the scheme contact the Waste Management Team on 028 9250 9453.



LISBURN
CITY COUNCIL

LISBURN RECYCLING HOTLINE

028 9250 9453

lisburncity.gov.uk